



3RB-VT-OLS

OPEN LINE SHAFT (OLS) - PRODUCT LUBRICATED



SPECIFICATIONS

MIN FLOW (1800 RPM)	300 GPM	68.1 m³/h
MAX FLOW (1800 RPM)	720 GPM	163.5 m³/h
DISCHARGE SIZES	6", 8"	152.4 mm, 203.2 mm
SOLIDS HANDLING	.5"	12.7 mm
MAX SPEED	1800 RPM	
MAX PRESSURE	175 PSI	1206.6 kPa
SHUT-OFF HEAD	180'	54.9 m
BEP HEAD	149'	45.4 m
BEP FLOW	520 GPM	118.1 m³/h
BEP	72%	
MAX. TOTAL PUMP LENGTH (TPL)	25'	7.6 m
BOWL DIAMETER	18.37"	466.6 mm
LUBRICATION TYPE	PRODUCT LUBRICATED	
IMPELLER ATTACHMENT	LOCKSCREW, KEYED, COLLAR	
IMPELLER TYPE	ENCLOSED	
ROTATION	COUNTER-CLOCKWISE FROM DRIVE END	
STAGES	SINGLE	

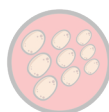
The 3RB-VT-OLS pump is designed with Cornell's renowned quality and durability. It features a 6" or 8" discharge column pipe and head size, enclosed left-hand rotation impeller, epoxy-lined cast iron bowl, wear rings, suction bell, cast iron discharge head, packing gland, and stuffing box with packing, industry-standard pump/column/head shafts and lineshaft couplings, lineshaft bearings, sleeve bearings, and optional basket strainer.

- High efficiencies due to spiral bowl construction
- Enclosed 316SS impeller
- Larger impeller diameters = higher head
- Fewer stages to replace and maintain
- No priming required
- Two-year warranty
- Wide flow range per model
- Fits standard VHS motors

A typical picture of the pump is shown. Please contact Cornell Pump Company for further details. All information is approximate and for general guidance only.



AGRICULTURE



FOOD



INDUSTRIAL



MINING



MUNICIPAL



OIL & GAS



REFRIGERATION



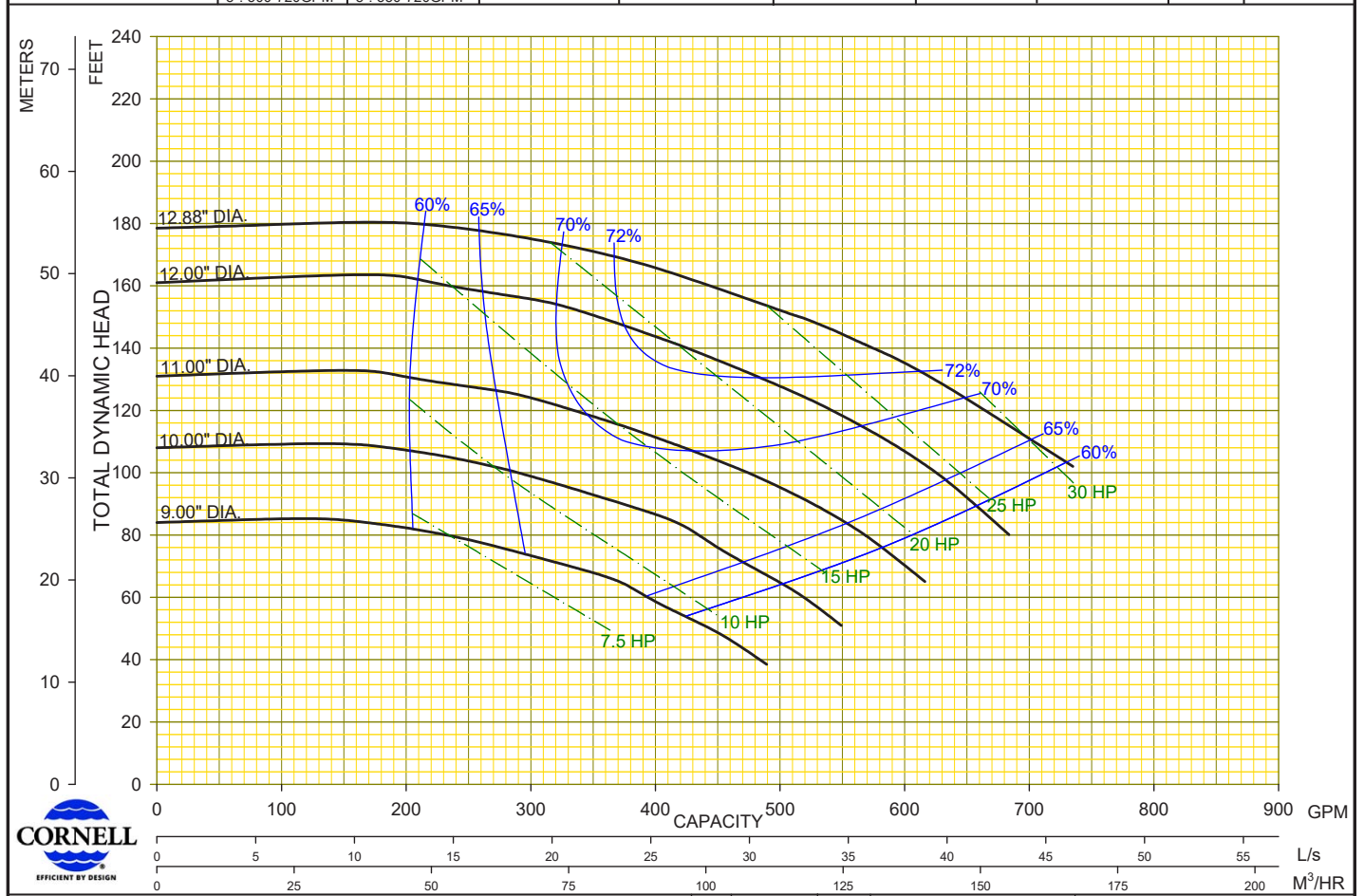
RENTAL



PARTS	SPECIFICATION
SUCTION STRAINER	304 SS OR GALVANIZED
SUCTION BELL	CAST IRON ASTM A48 CLASS 30
VOLUTE BOWL	CAST IRON ASTM A48 CLASS 30
BOWL COATING	3M SKOTCHKOTE FUSION BONDED EPOXY 134, INTERNAL SURFACES
WEAR RINGS	BRONZE SAE 660
IMPELLER	316 STAINLESS STEEL
COLUMN ADAPTER	CAST IRON ASTM A48 CLASS 30

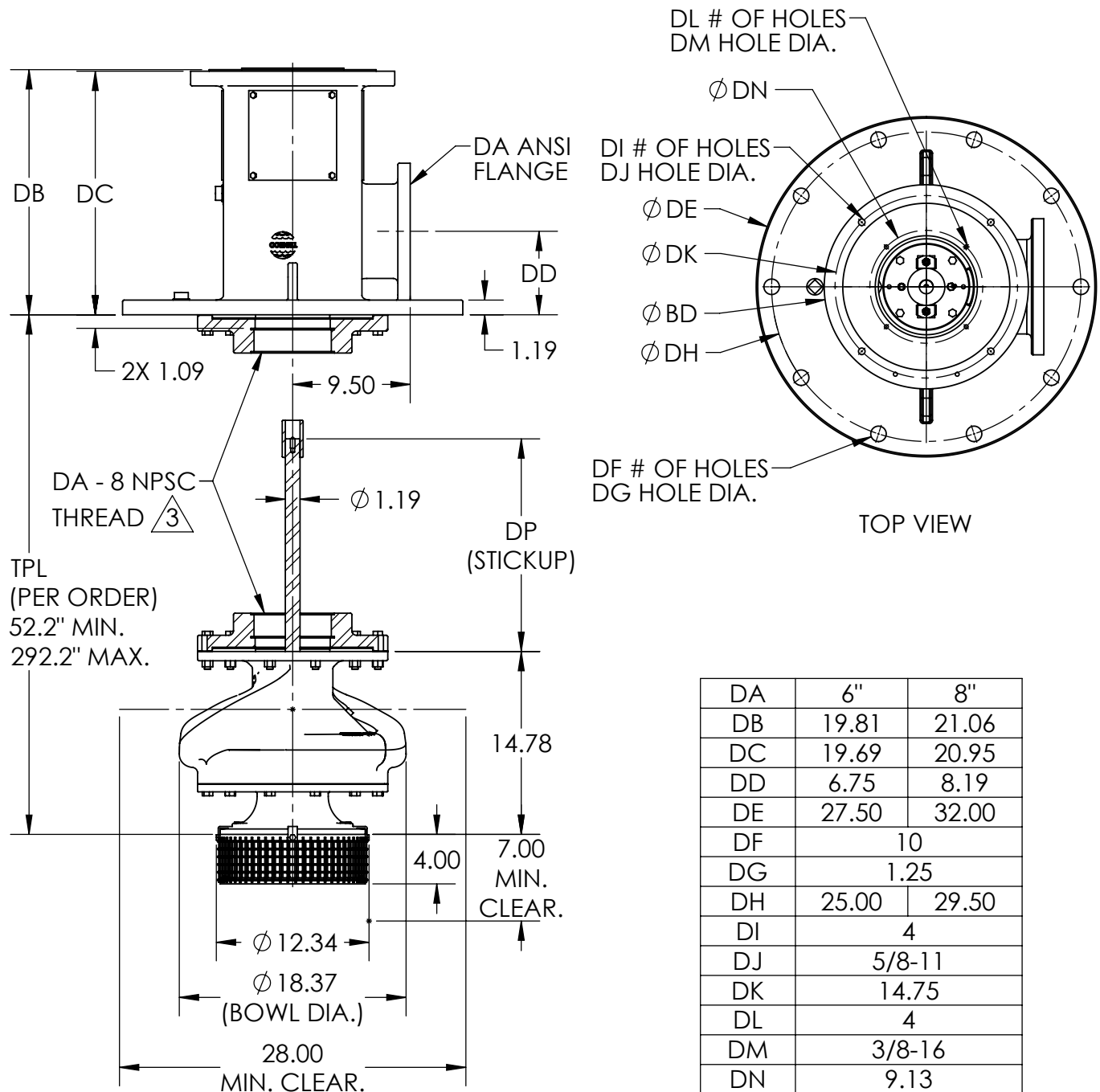
PARTS	SPECIFICATION
LINESHAFT & HEADSHAFT	416 STAINLESS STEEL
LINESHAFT COUPLING	304 STAINLESS STEEL
DISCHARGE HEAD	CAST IRON ASTM A48 CLASS 30
BEARING RETAINER SPIDER	BRONZE SAE 660
LINESHAFT SPIDER BEARING	NITRILE RUBBER
SLEEVE BEARING	C89835 TIN BRONZE, LEAD-FREE
PACKING GLAND	CAST IRON ASTM A48 CLASS 30
PACKING	GRAPHITED ACRYLIC

Bowl performances shown are for S.G. 1.0 60°F water. Curves represent single stage performance with coated bowl and without suction strainer.	Discharge ELS 6": 280-720 GPM 8": 500-720GPM	Discharge OLS 6": 300-720 GPM 8": 550-720GPM	Speed 1780 RPM	Impeller Dia. VARIOUS	Style ENCLOSED	Bowl O.D. 18.37"	Solids Dia. .50"	N _s 915	No. Vanes 7
-----------------------------------------------------------------------------------------------------------------------------------------------	----------------------------------------------------	----------------------------------------------------	-------------------	--------------------------	-------------------	---------------------	---------------------	-----------------------	----------------



Cornell Pump Company • Clackamas, Oregon	00	06/19/18	FM	MODEL : 3RB-VT TYPE : VERTICAL TURBINE	CURVE NO: 3RBVT18
	01	04/06/19	FM		

3RB-VT-OLS



NOTES:

1. OVERALL DIMENSIONS CAN VARY ± 0.12 INCH
2. DO NOT USE FOR CONSTRUCTION UNLESS CERTIFIED
3. *NATIONAL PIPE STRAIGHT COUPLING THREAD, 8 THREADS PER INCH.
4. COLUMN/SHAFTING WEIGHS APPROX 23-31LB PER FOOT.



MARKET AND PRODUCT LINE



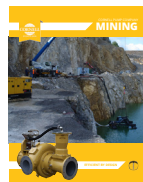
AGRICULTURE



FOOD PROCESS



INDUSTRIAL



MINING



MUNICIPAL



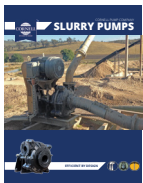
WATER
TRANSFER



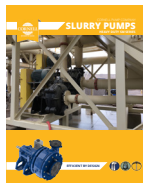
REFRIGERATION



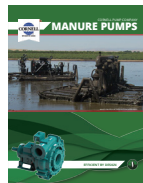
CONSTRUCTION



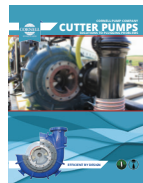
SLURRY



SLURRY SM



MANURE



CUTTERS



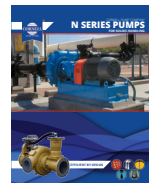
SELF PRIMING



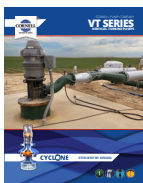
HIGH FLOW



MX SERIES



N SERIES



CYCLONE™



EDGE™



HYDRAULIC
SUBS



IMMERSIBLE



CD4MCU



RUN-DRY™



PRIMING
SYSTEMS



CYCLOSEAL®

Cycloseal® and Redi-Prime® are Registered Trademarks of Cornell Pump Company.

Cornell pumps and products are the subject of one or more of the following U.S. and foreign patents: 3,207,485; 3,282,226; 3,295,456; 3,301,191; 3,630,637; 3,663,117; 3,743,437; 4,335,886; 4,523,900; 5,489,187; 5,591,001; 6,074,554; 6,036,434; 6,079,958; 6,309,169; 2,320,742; 96/8140; 319,837; 918,534; 1,224,969; 2,232,735; 701,979 and are the subject of pending U.S. and foreign patent applications.

CORNELLPUMP.COM
©2019 CORNELL PUMP COMPANY



Cornell Pump Company
Clackamas, Oregon, USA
P: +1 (503) 653-0330
F: +1 (503) 653-0338

AUTHORIZED CORNELL PUMP DISTRIBUTOR